

ROUND GROVE TOWNSHIP

Each township has six files containing six sections in each, and one file containing all 36 sections.

RoundGrove01to06.pdf
RoundGrove07to12.pdf
RoundGrove13to18.pdf
RoundGrove19to24.pdf
RoundGrove25to30.pdf
RoundGrove31to36.pdf
RoundGroveAll36.pdf

The points are listed starting with the point above the SE corner and continuing in a counter-clockwise rotation around the section. This normally begins with the East point, Northeast, then North, but may also include Witness Corners, and/or Meander Corners.

Definitions

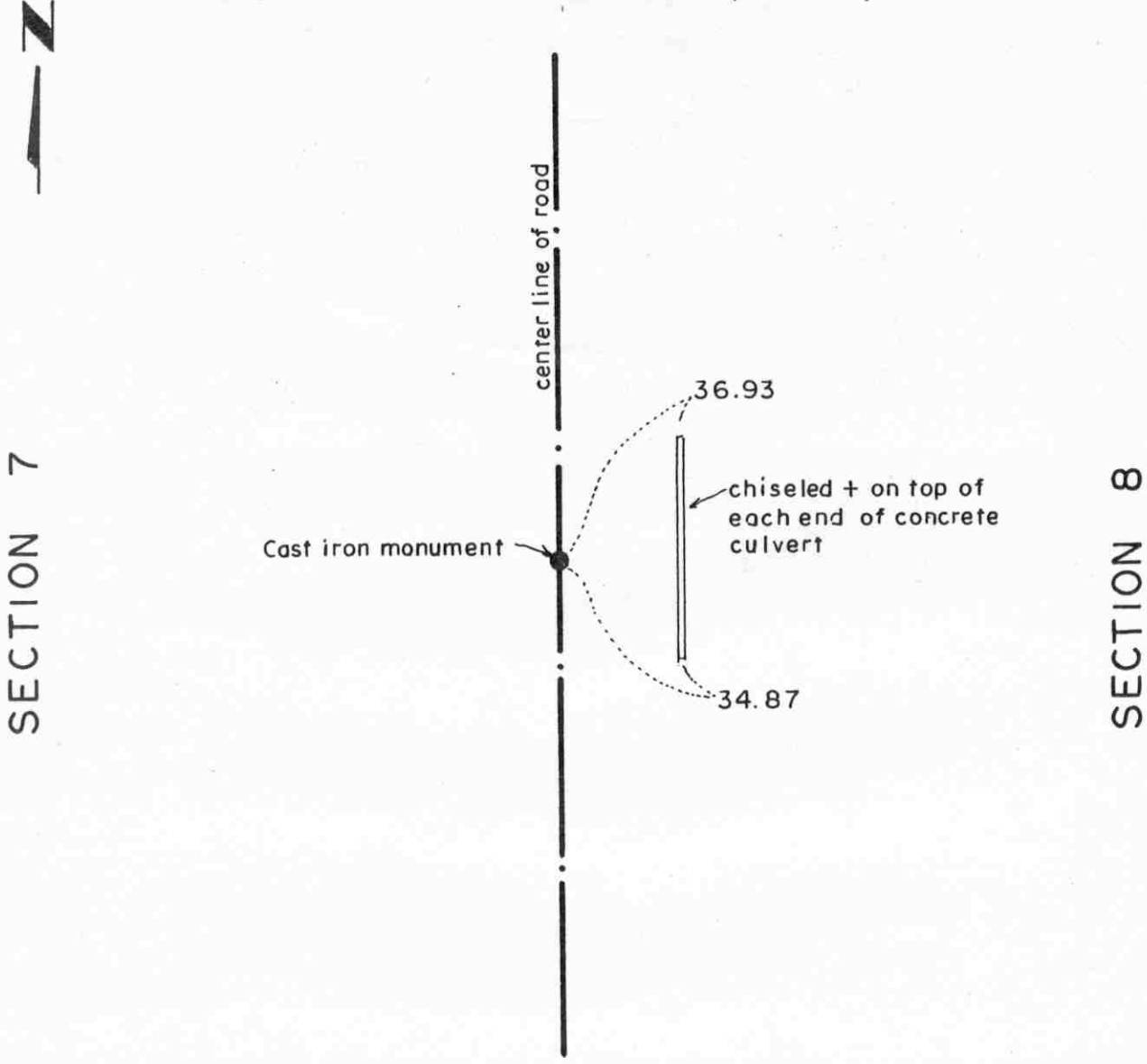
Witness Corner: A witness corner “stands in” when the true corner cannot be monumented or occupied because of difficult terrain or obstruction of the corner sight. The witness corner must be on the section line and is usually 5 or 10 chains away from the true corner.

Meander Corner: The intersection of a township, range, or section line and the banks of a navigable stream or meandering body of water.

Certificate of Location of Government Corner

EAST QUARTER corner, Section 7, Township 114 North, Range 30 West

SKETCH OF REFERENCE TIES (NO SCALE)



Statement of evidence relative to this corner location on sheet 2

I hereby certify that this document was prepared by me or under my direct supervision.

Willard Pellinen
Willard Pellinen
McLeod County Surveyor
License No. 9626.

Date Jan. 6, 1995

OFFICE OF THE COUNTY RECORDER
MCLEOD COUNTY, MINNESOTA

I hereby certify that this document was filed in this office at 9 o'clock A. M. on the 10th day of January, 19 95.

Carmen Obelie Mulder County Recorder

By _____, Deputy.

Document No. 263615

Certificate of Location of Government Corner
East Quarter Corner, Section 7, Township 114 North, Range 30 West

1855. Thomas Simpson of the General Land Office originally established this corner. He set a post in a mound with trench and pits, charred stake and planted osage orange seeds at the northeast and southwest corners of the mound.

December 19, 1974. Dickman Knutson, county surveyor, measured the east line of Section 7 and set a temporary quarter corner on a proration of County Highway Department distances to the northeast and southeast corners of Section 7. No occupation lines running east or west to help locate this corner.

June 6, 1975. Knutson dug for the corner (John Tupa from Hutchinson with a backhoe). They dug a hole 8 feet by 5 feet by 4 1/2 feet deep. They found gravel all the way down. The road base had been excavated down to below the natural ground and filled with gravel. Any government corner would have been destroyed.

December 17, 1975. Knutson set a spike in the center line of the north-south road on a proration of county highway distances between the section corners and took reference ties.

July 7, 1976. Knutson set a McLeod County cast iron monument at the corner.

January, 1995. Checked reference ties.

Certificate of Location of Government Corner

NORTHEAST corner, Section 7, Township 114 North, Range 30 West

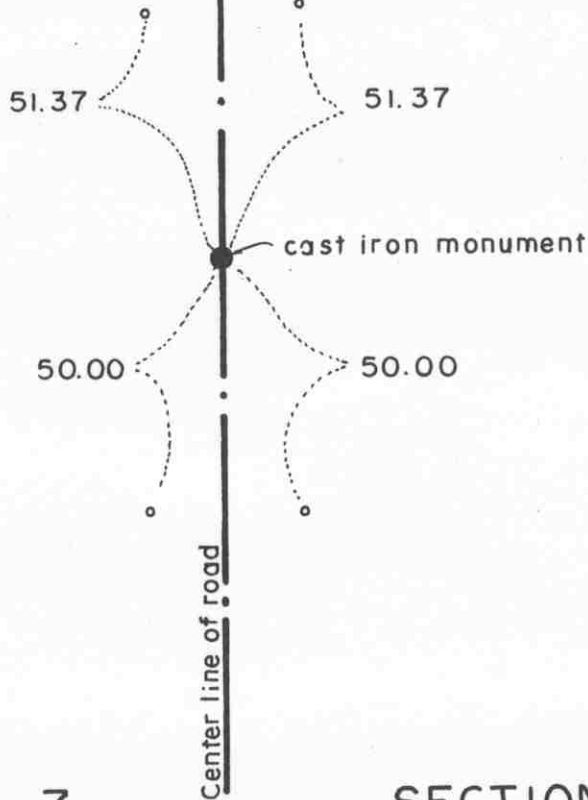
SKETCH OF REFERENCE TIES (NO SCALE)



SECTION 6

SECTION 5

Ties are to 1/2 inch diam. iron pipes in shoulder of road.



SECTION 7

SECTION 8

Statement of evidence relative to this corner location on sheet 2

I hereby certify that this document was prepared by me or under my direct supervision.

Willard Pellinen

Willard Pellinen
McLeod County Surveyor
License No. 9626.

Date May 15, 1995

OFFICE OF THE COUNTY RECORDER
MCLEOD COUNTY, MINNESOTA

I hereby certify that this document was filed in this office at 9 o'clock A. M. on the 18th day of May, 19 95.

Carmen Ostlie Mulder, County Recorder

By _____, Deputy.

Document No. 265802

Certificate of Location of Government Corner
Northeast Corner, Section 7, Township 114 North, Range 30 West

1855. Thomas Simpson of the General Land Office originally established this corner. He set a post, erected mound with trench and pits, charred stake and planted osage orange seeds at each angle.

No occupation lines running east or west to help reestablish this corner.

December 9, 1974. Dickman Knutson, county surveyor, measured the east line of Sections 6 and 7 and set a temporary section corner at a proration of old county highway department distances.

June 6, 1975. Knutson dug for the corner, John Tupa from Hutchinson with a backhoe. They found no evidence of the government corner.

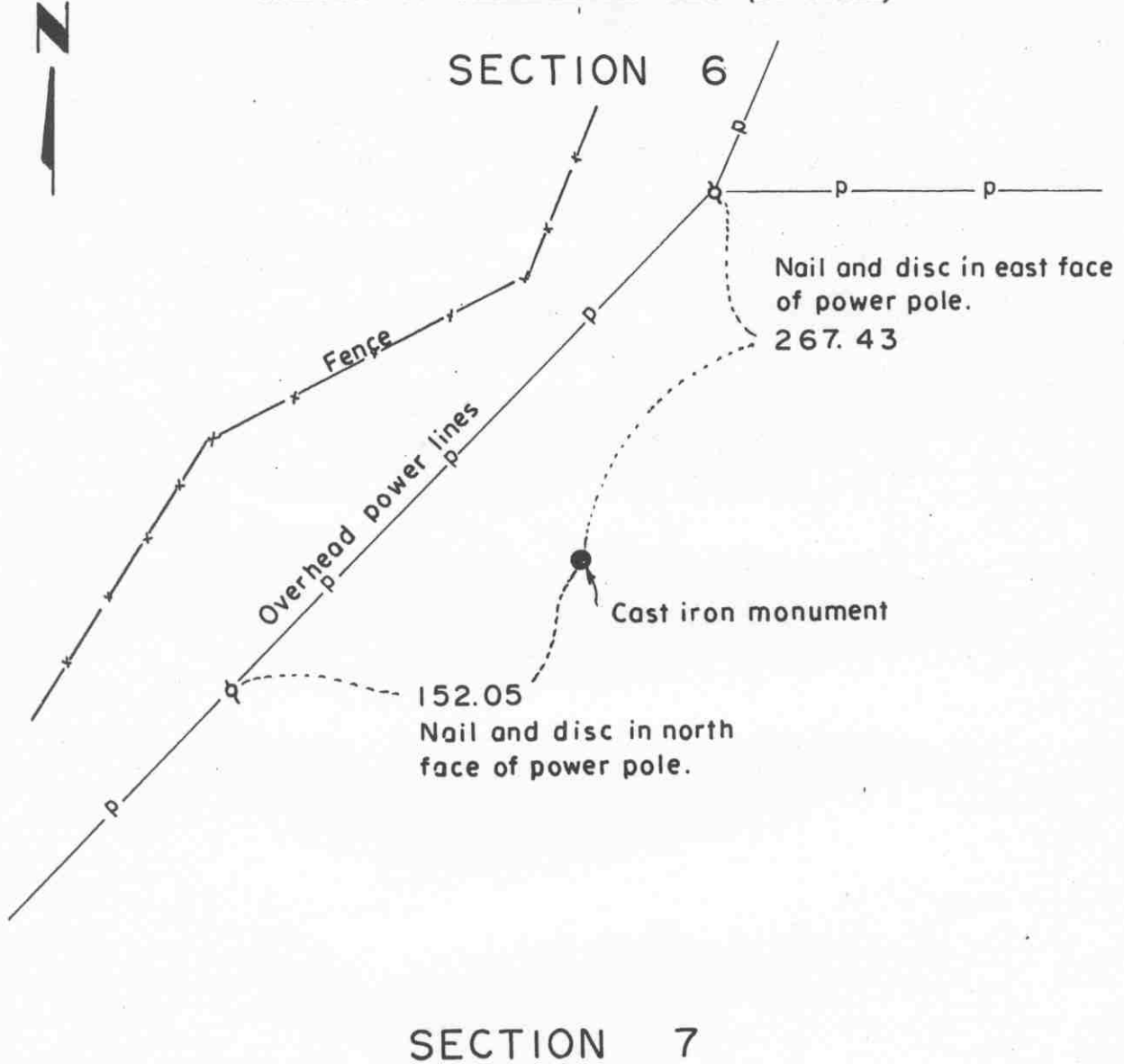
July 7, 1976. Knutson set a McLeod County cast iron monument at a proration of the 1939 distances by the highway department and took available reference ties.

February 16, 1995. We checked the reference ties.

Certificate of Location of Government Corner

NORTH QUARTER corner, Section 7, Township 114 North, Range 30 West

SKETCH OF REFERENCE TIES (NO SCALE)



Statement of evidence relative to this corner location on sheet 2

I hereby certify that this document was prepared by me or under my direct supervision.

Willard Pellinen
Willard Pellinen
McLeod County Surveyor
License No. 9626.

Date Sept 7, 1995

OFFICE OF THE COUNTY RECORDER
MCLEOD COUNTY, MINNESOTA

I hereby certify that this document was filed in this office at 9 o'clock A.M. on the 14th day of Sept. 19 95.

Carmen O'Brien Gulder, County Recorder

By _____, Deputy.

Document No. 268038

Certificate of Location of Government Corner
North Quarter Corner, Section 7, Township 114 North, Range 30 West

1855. Thomas Simpson of the General Land Office originally established this corner. He set a post in a mound with trench and pits, charred stake and planted osage orange seeds at the northeast and southwest corners of the mound.

No occupation or property lines to help reestablish this corner. There is a fence running north from the south quarter corner of a Section 7 about 3/4 of the way to the north quarter corner. This fence has been accepted by adjacent property owners as being along the north-south quarter line of Section 7.

December, 1974. Dickman Knutson, county surveyor, intersected the northerly prolongation of the fence and a straight line between the northeast and the northwest corners of Section 7, and set an iron pipe. This point falls within 9 feet of being on a proration of government distances between the section corners.

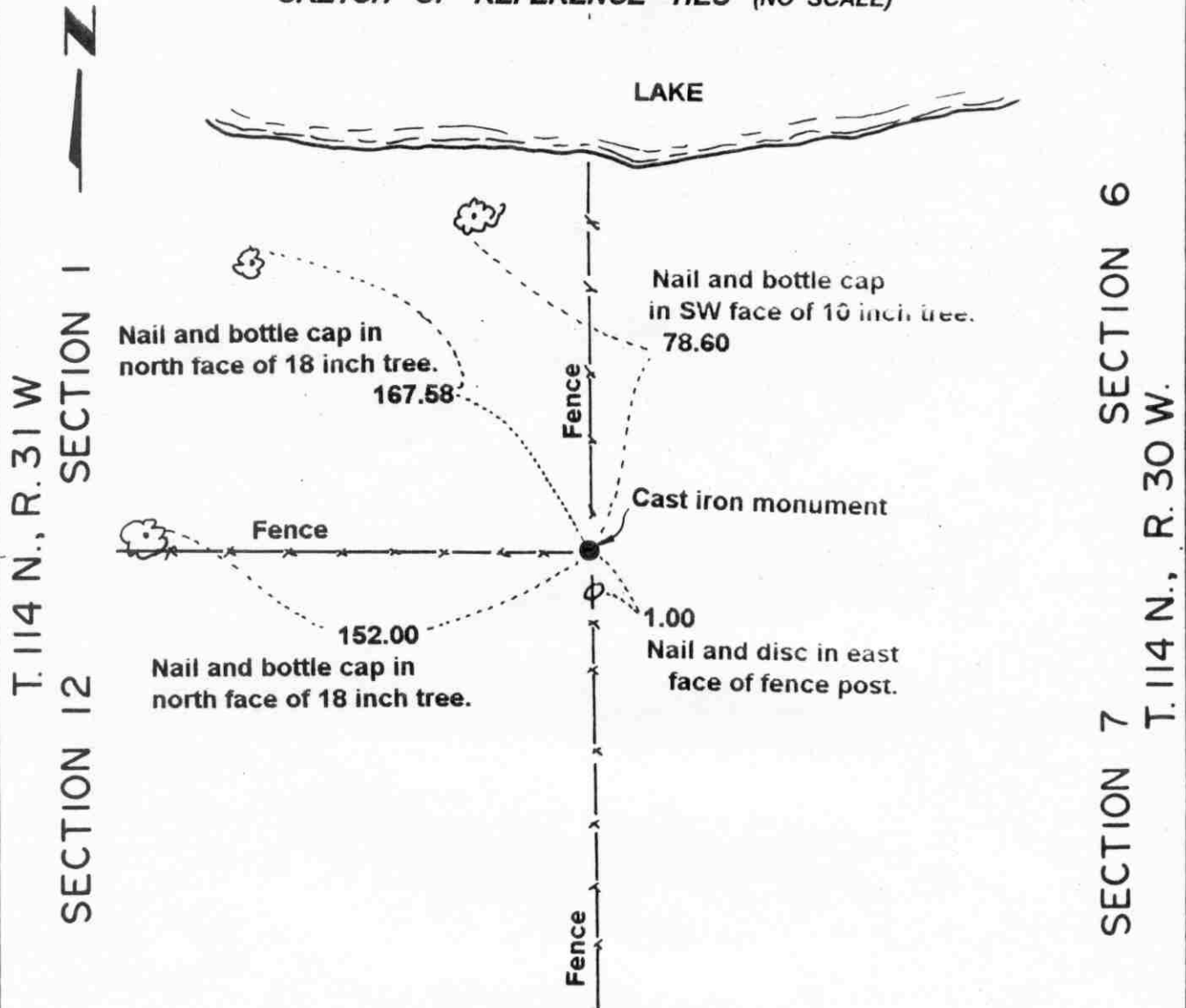
September 15, 1976. Knutson set a McLeod County cast iron monument at the corner and took reference ties.

February 27, 1995. We checked the reference ties.

Certificate of Location of Government Corner

NORTHWEST corner, Section 7, Township 114 North, Range 30 West

SKETCH OF REFERENCE TIES (NO SCALE)



Statement of evidence relative to this corner location on sheet 2

I hereby certify that this document was prepared by me or under my direct supervision.

Willard Pellinen
 Willard Pellinen
 McLeod County Surveyor
 License No. 9626.

Date June 1, 1993

**OFFICE OF THE COUNTY RECORDER
 MCLEOD COUNTY, MINNESOTA**

I hereby certify that this document was filed in this office at 9 o'clock A.M. on the 9th day of January 19 96.

Carmen Asthis Mulder County Recorder

By Charleen Engelman, Deputy.

Document No. 270180

Certificate of Location of Government Corner
Northwest Corner, Section 7, Township 114 North, Range 30 West

1855. John Ryan of the General Land Office originally established this corner. He set a post, deposited charcoal, dug pits and trench, built mound and planted osage orange seeds at the corners of the mound.

May 16, 1973. Albion Klammer, 64 years old and has owned land in the Northwest Quarter of Section 7 since 1946, said he doesn't know about the government corner but said the fences, running north, south and west have been accepted as being along the section lines. Delmar Schuette, 47 years old agrees.

November 13, 1973. Dickman Knutson, county surveyor, set a McLeod County cast iron monument at the fence intersection and took available reference ties.

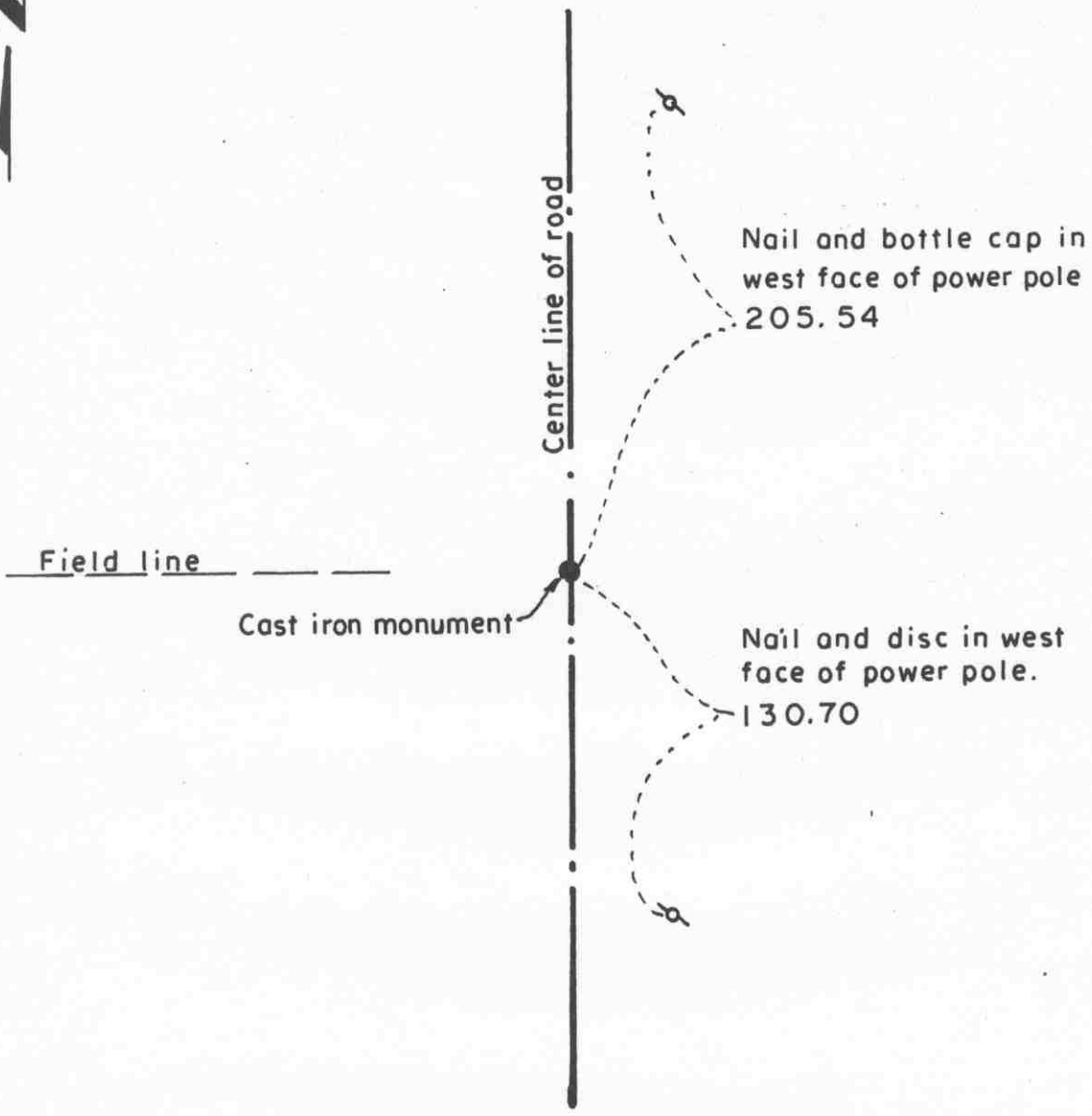
January, 1995. The monument set by Knutson is accepted as marking the location of the government corner. It fits long standing occupation lines, the fences, which have been accepted by adjoining land owners as running along the section lines.

Certificate of Location of Government Corner

West Quarter corner, Section 7, Township 114 North, Range 30 West

SKETCH OF REFERENCE TIES (NO SCALE)

SECTION 12, T.114 N., R. 31 W.



SECTION 7, T.114 N., R. 30 W.

Statement of evidence relative to this corner location on sheet 2

I hereby certify that this document was prepared by me or under my direct supervision.

Willard Pellinen
Willard Pellinen
McLeod County Surveyor
License No. 9626.

Date Sept. 7, 1995

OFFICE OF THE COUNTY RECORDER MCLEOD COUNTY, MINNESOTA

I hereby certify that this document was filed in this office at 9 o'clock A. M. on the 14th day of Sept 19 95.

Carmin Obelisk Muelder, County Recorder

By _____, Deputy.

Document No. 268039

Certificate of Location of Government Corner

West Quarter Corner, Section 7, Township 114 North, Range 30 West

1855. John Ryan of the General Land Office originally established this corner. He set a post, deposited charcoal, dug pits and trench, built mound and planted osage orange seeds at the corners of the mound.

We found no old survey information to help reestablish this corner. Adjacent land owners have accepted the center line of the north-south road as being the section line and the field line running west as being the east-west quarter line of Section 12.

February 9, 1973. Dickman Knutson, county surveyor, excavated for the corner. (John Tupa from Hutchinson with a backhoe) Down 1 1/2 feet below the road surface they found a 2 inch diameter iron pipe. They took reference ties.

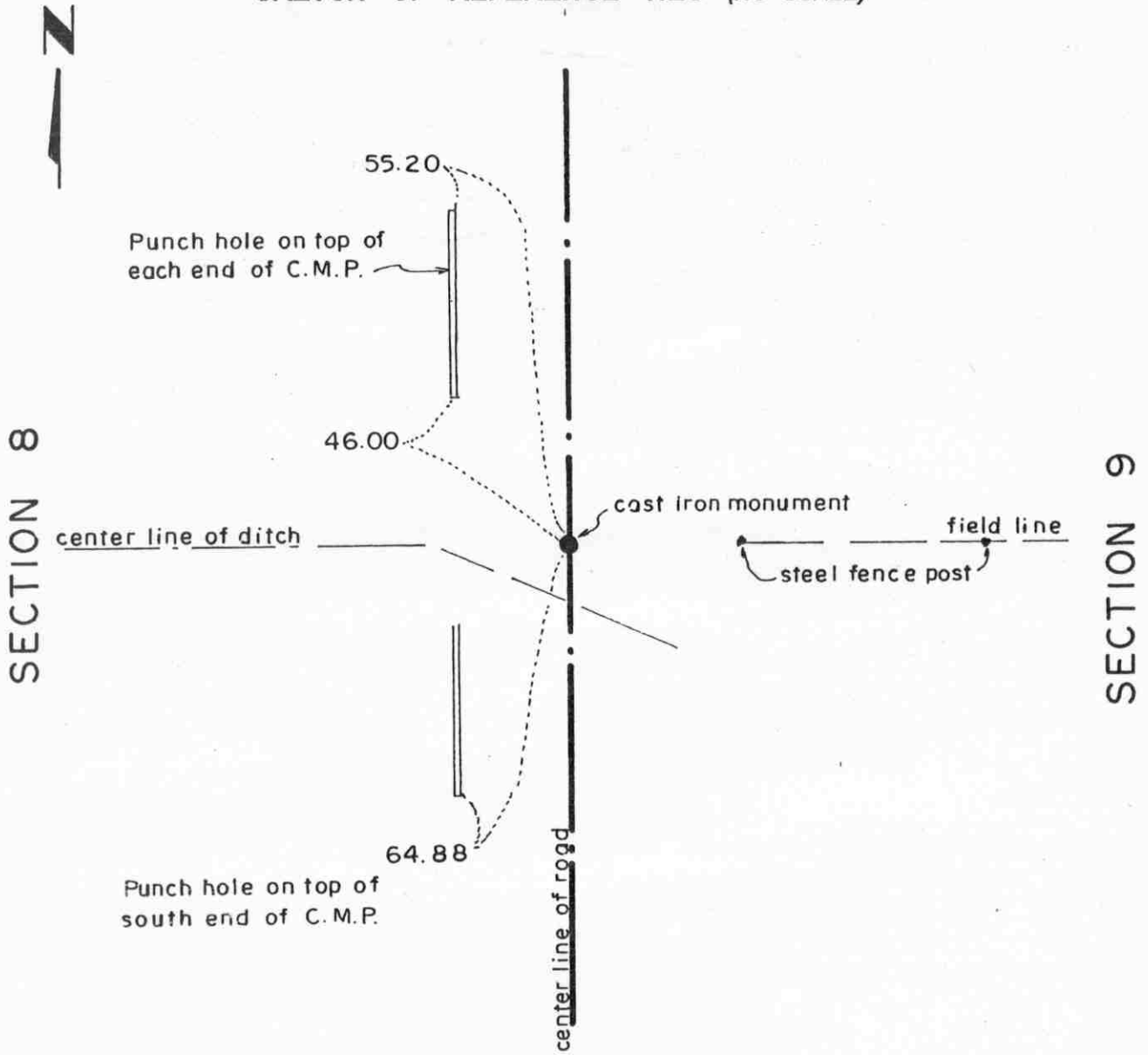
August 21, 1973. Knutson set a McLeod County cast iron monument at the corner and took additional ties.

February 27, 1995. We found the monument in good condition down 7 inches below the surface of the gravel road and took new reference ties.

Certificate of Location of Government Corner

EAST QUARTER corner, Section 8, Township 114 North, Range 30 West

SKETCH OF REFERENCE TIES (NO SCALE)



Statement of evidence relative to this corner location on sheet 2

I hereby certify that this document was prepared by me or under my direct supervision.

Willard Pellinen

Willard Pellinen
McLeod County Surveyor
License No. 9626.

Date Jan. 6, 1995

OFFICE OF THE COUNTY RECORDER
MCLEOD COUNTY, MINNESOTA

I hereby certify that this document was filed in this office at 9 o'clock A.M. on the 10th day of January, 19 95.

Carmen Estlie Mulder County Recorder

By _____, Deputy.

Document No. 263617

Certificate of Location of Government Corner
East Quarter Corner, Section 8, Township 114 North, Range 30 West

1855. Thomas Simpson of the General Land Office originally established this corner. He set a post in a mound with trench and pits, charred stake and planted osage orange seeds at the northeast and southwest corners of the mound.

December 9, 1974. Dickman Knutson, county surveyor, measured the east line of Section 8 and set a temporary quarter corner in the center of the north-south road, in line with a ditch to the west and a field line to the east.

May 2, 1975. Mr. Elmer Kirchoff, 70 years old and has been on the township board for 35 years said a stake was found at the quarter corner but is gone now, destroyed by construction of the ditch. He said the ditch is on the east-west quarter line of Section 8. James Kirchoff, in the Northwest Quarter of Section 9 agrees. Mr. Zieman, 88 years old and was on the township board when a lot of the roads were built, also said the center of the road in line with the ditch to the west is the corner.

July 8, 1976. Knutson set a McLeod County cast iron monument on the center line of the north-south road, in line with the center of the ditch to the west, and took available reference ties.

January, 1995. Checked reference ties.

Certificate of Location of Government Corner

NORTHEAST corner, Section 8, Township 114 North, Range 30 West

SKETCH OF REFERENCE TIES (NO SCALE)



SECTION 5

SECTION 4

Cast iron monument

65.20

Punch hole on top of each end of C.M.P.

center line of road

63.32

49.28

Nail and disc in power pole

center line of road

SECTION 8

SECTION 9

Statement of evidence relative to this corner location on sheet 2

I hereby certify that this document was prepared by me or under my direct supervision.

Willard Pellinen
Willard Pellinen
McLeod County Surveyor
License No. 9626.

Date Jan. 6, 1995

OFFICE OF THE COUNTY RECORDER
MCLEOD COUNTY, MINNESOTA

I hereby certify that this document was filed in this office at 9 o'clock A. M. on the 10th day of January, 19 95.

Carmen O'Brien Mulder, County Recorder

By _____, Deputy.

Document No. 263616

Certificate of Location of Government Corner
Northeast Corner, Section 8, Township 114 North, Range 30 West

1855. Thomas Simpson of the General Land Office originally established this corner. He set a post in a marsh, erected mound with trench and pits, charred stake and planted osage orange seeds at each angle.

May 2, 1975. Mr. Elmer Kirchoff, 70 years old, and has been on the township board for 35 years, said the township dug for this corner when road was built but didn't find anything. He said the roads were built along the section lines. Mr. Zieman, 88 years old, and has been on the township board when a lot of the roads were built, also said the roads were built along the section lines.

July 8, 1976. Dickman Knutson, county surveyor, set a cast iron monument at the intersection of the roads, roads north, south and east, and took available reference ties.

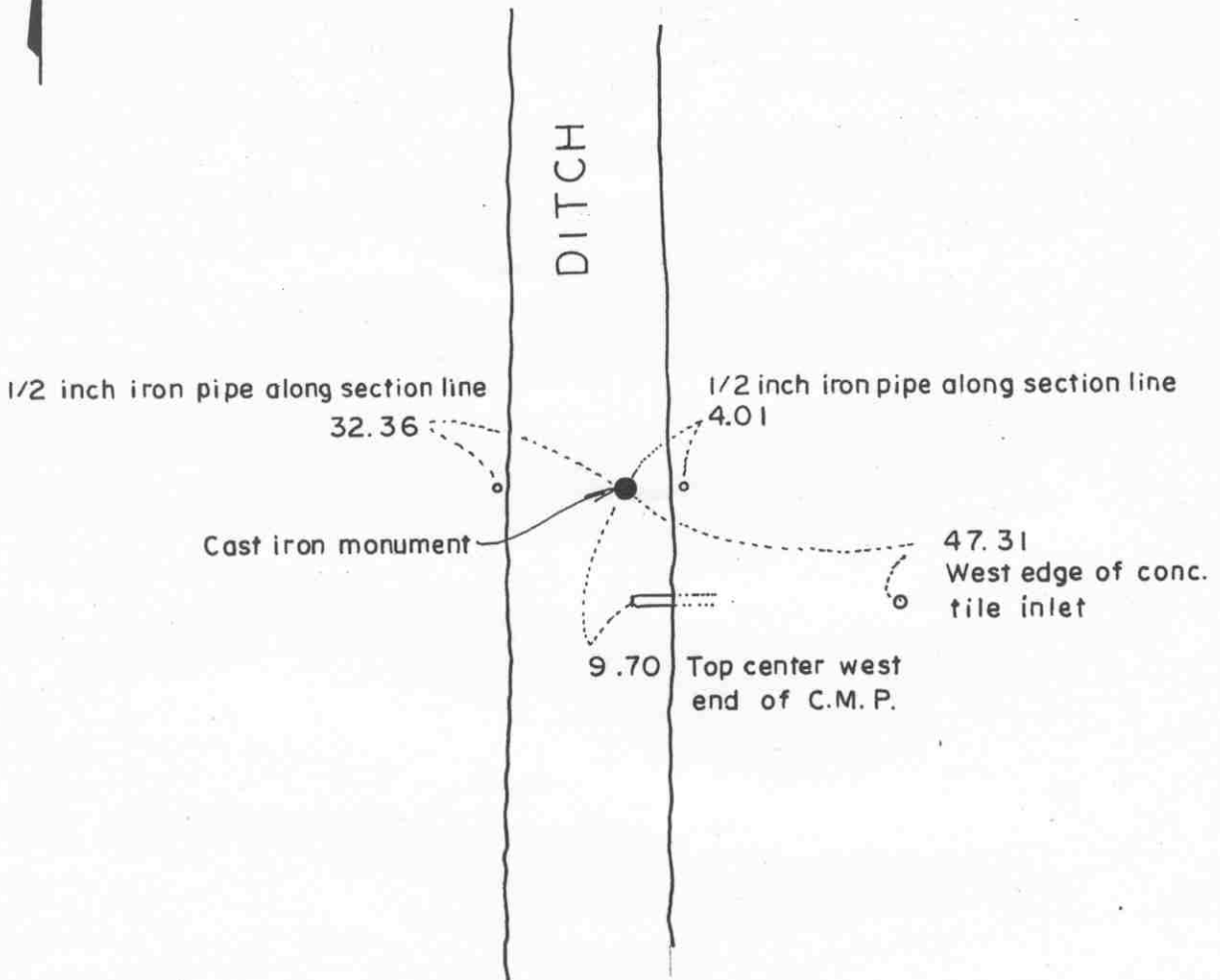
January, 1995. Checked reference ties.

Certificate of Location of Government Corner

NORTH QUARTER corner, Section 8, Township 114 North, Range 30 West

SKETCH OF REFERENCE TIES (NO SCALE)

SECTION 5



SECTION 8

Statement of evidence relative to this corner location on sheet 2

I hereby certify that this document was prepared by me or under my direct supervision.

Willard Pellinen

Willard Pellinen
McLeod County Surveyor
License No. 9626.

Date May 15, 1995

OFFICE OF THE COUNTY RECORDER
MCLEOD COUNTY, MINNESOTA

I hereby certify that this document was filed in this office at 9 o'clock A M. on the 18th day of May 19 95.

Carmen Ostlie Mulder, County Recorder

By _____, Deputy.

Document No. 265803

Certificate of Location of Government Corner

North Quarter Corner, Section 8, Township 114 North, Range 30 West

1855. Thomas Simpson of the General Land Office originally established this corner. He set a post in a mound with trench and pits, charred stake and planted osage orange seeds at the northeast and southwest corners of the mound.

1976. Adjacent property owners say ditch running north and south is close to the north-south quarter lines of Sections 5 and 8. Nobody knows exactly how close to the line the ditch was built.

December 28, 1976. Dickman Knutson, county surveyor, set an iron pipe on line and split between the section corners. This falls about 4-5 feet west of the east bank of the ditch, 10-14 feet east of the center of the ditch.

July 18, 1979. We set a McLeod County cast iron monument and took available reference ties.

February 16, 1995. We checked the reference ties.

Certificate of Location of Government Corner

EAST QUARTER corner, Section 9, Township 114 North, Range 30 West

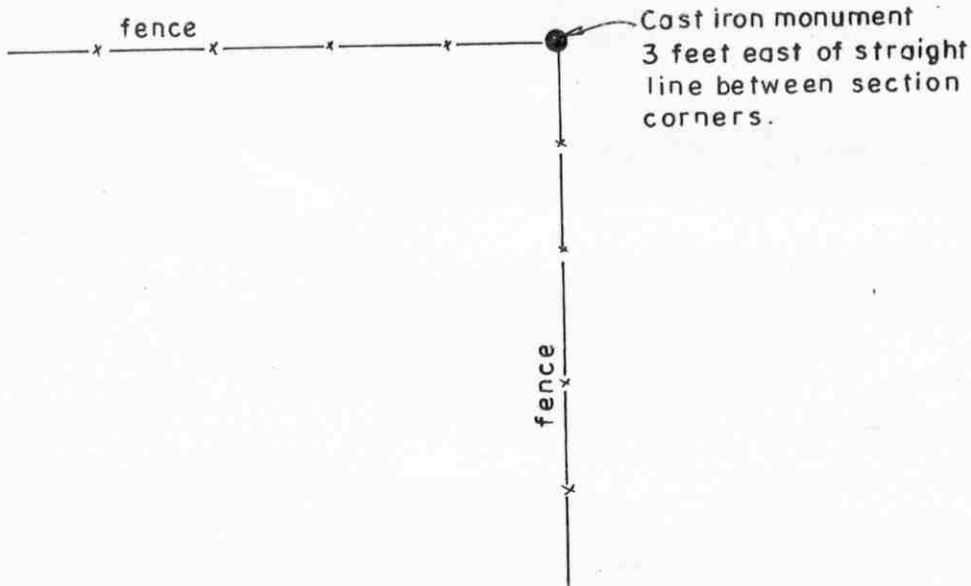
SKETCH OF REFERENCE TIES (NO SCALE)



2636.36 to NE cor. of Sec. 9
2663.21 to SE cor. of Sec. 9

SECTION 9

SECTION 10



Statement of evidence relative to this corner location on sheet 2

I hereby certify that this document was prepared by me or under my direct supervision.

Willard Pellinen
Willard Pellinen
McLeod County Surveyor
License No. 9626.

Date Jan 6, 1995

OFFICE OF THE COUNTY RECORDER
MCLEOD COUNTY, MINNESOTA

I hereby certify that this document was filed in this office at 9 o'clock A. M. on the 10th day of January, 19 95.

Carmen Estlie Mulder, County Recorder

By _____, Deputy.

Document No. 263618

Certificate of Location of Government Corner
East Quarter Corner, Section 9, Township 114 North, Range 30 West

1855. Thomas Simpson of the General Land Office originally established this corner. He set a post in a mound with trench and pits, charred stake and planted osage orange seeds at the corners of the mound.

1980. James Nutter, 75 years old and had lived in the Northwest Quarter of Section 10 all his life, said the fence intersection is the quarter corner. It has always been accepted by adjoining land owners as the corner.

February 27, 1984. We looked for a monument at the fence intersection but found no evidence of the government corner. Mr. Nolan Schulz, 47 years old and had lived in the Southwest Quarter of Section 10 all his life, said the fence intersection has been accepted as the quarter corner by adjoining land owners.

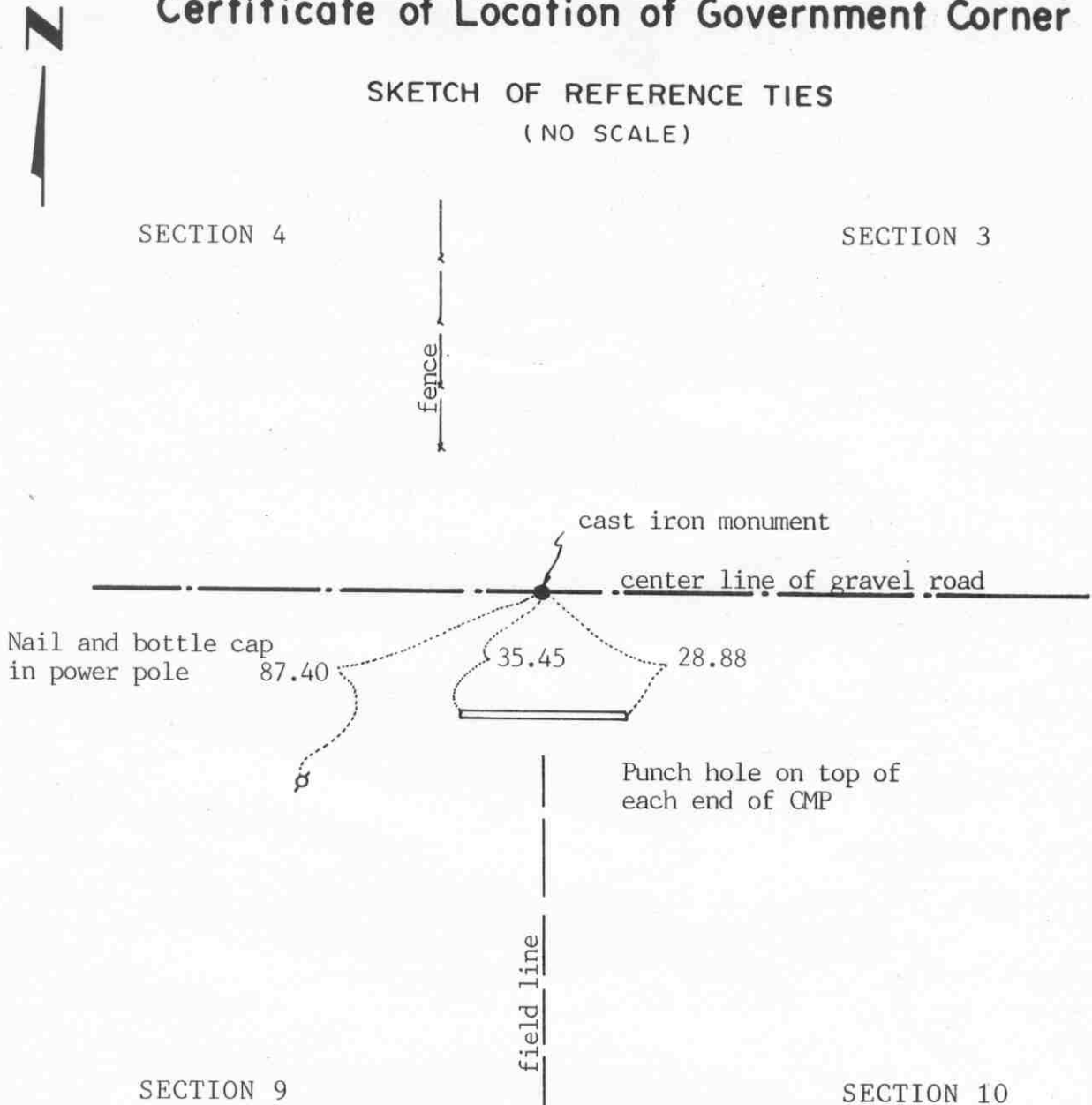
August 2, 1984. We set a McLeod County cast iron monument at the intersection of fences south and west.

January, 1995. We found the monument in good condition.

NORTHEAST corner, Section 9, Township 114 North, Range 30 West

Certificate of Location of Government Corner

SKETCH OF REFERENCE TIES (NO SCALE)



Statement of evidence relative to this corner location on sheet 2

I hereby certify that this document was prepared by me or under my direct supervision.

Willard Pellinen
Willard Pellinen
McLeod County Surveyor
License No. 9626

Date Jan. 11, 1991

OFFICE OF THE COUNTY RECORDER MCLEOD COUNTY, MINNESOTA.

I hereby certify that this document was filed in this office at 9 o'clock A..M. on the 22nd day of Jan, 1991.

Carmen Ostlie, County Recorder

By _____, Deputy

Document No. 237199

Certificate of Location of Government Corner

The government notes show this corner was established in 1855 by Thomas Simpson. He set a post, erected a mound with trench and pits, charred stake and he planted osage orange seeds at each angle.

1898. Field notes of a survey by E.L.Higgins show a distance of 2645 feet to the north quarter corner of Section 9. Notes don't show what was at the corner.

July 5, 1978. We dug for the corner, John Tupa from Hutchinson with a backhoe. Down 1 foot below the road surface we found two 5 inch diameter stones. We tied them off and dug deeper. Down 3 feet below the surface we found a 12 inch by 16 inch stone with a rotted wood stake beside it. We took reference ties, stone was directly below the first stones. We dug a hole 15 feet long, to the west, a fence running north is about 10 feet west of the found stones. The found stones were in line with a field line running south. We found nothing else. Our distance to the north quarter corner of Section 9 was about 3 feet shorter than Higgins had in 1898.

July 31, 1978. We set a spike at the corner and took additional reference ties.

August 31, 1978. We set a McLeod County cast iron monument at the corner.

We accept the stones we found as having perpetuated the correct location of the section corner.

Certificate of Location of Government Corner

NORTH QUARTER corner, Section 9, Township 114 North, Range 30 West

SKETCH OF REFERENCE TIES (NO SCALE)

SECTION 4



Nail and bottle cap in south face of post by telephone pedestal.

232.74

1/2 inch diam. iron pipe in shoulder of road.

10.35

1/2 inch iron pipe 47.00

Center line of road

Cast iron monument

237.36

Nail and bottle cap in north face of power pole.

72.85

Nail and bottle cap in NE face of power pole.

Field line

SECTION 9

Statement of evidence relative to this corner location on sheet 2

I hereby certify that this document was prepared by me or under my direct supervision.

Willard Pellinen
Willard Pellinen
McLeod County Surveyor
License No. 9626.

Date May 15, 1995

OFFICE OF THE COUNTY RECORDER
MCLEOD COUNTY, MINNESOTA

I hereby certify that this document was filed in this office at 9 o'clock A.M. on the 18th day of May, 1995.

Carmen Estlie Mulder, County Recorder

By _____, Deputy.

Document No. 265804

Certificate of Location of Government Corner
North Quarter Corner, Section 9, Township 114 North, Range 30 West

1855. Thomas Simpson of the General Land Office originally established this corner. He set a post in a mound with trench and pits, charred stake and planted osage orange seeds at the northeast and southwest corners of the mound.

March 27, 1978. Dickman Knutson, county surveyor, measured the north line of Section 9 and set a temporary quarter corner on the center of the east-west road in line with a fence to the south. This has been accepted by adjacent land owners as being the quarter corner.

July 5, 1978. Knutson excavated for the corner. (John Tupa from Hutchinson with a backhoe) They found a rotted wood stake down 3 feet below the surface of the gravel road. They took reference ties and dug a hole 15 feet by 15 feet but found no other evidence of the government corner. This was within a few feet of 1898 distance by E. L. Higgins to the northwest corner of Section 9.

July 31, 1978. Knutson set a spike at the corner and took additional ties.

August 31, 1978. Knutson set a McLeod County cast iron monument.

February 16, 1995. We checked the reference ties.

Certificate of Location of Government Corner



SKETCH OF REFERENCE TIES

(NO SCALE)

SECTION 10

1/2 inch diam. iron pipe
in shoulder of road

22.25

25.45

center line of bituminous road

36.75

37.45

cast iron monument
fence

Ties are to a clamp
on top of each end
of CMP

SECTION 11

Statement of evidence relative to this corner location on sheet 2

I hereby certify that this document was prepared by me or under my direct supervision.

Willard Pellinen
Willard Pellinen
McLeod County Surveyor
License No. 9626

Date Jan 16, 1991

OFFICE OF THE COUNTY RECORDER
MCLEOD COUNTY, MINNESOTA.

I hereby certify that this document was filed in this office at 9 o'clock A.M. on the 22nd day of Jan, 1991.

Carmen Ostlie, County Recorder
By _____, Deputy

Document No. 237201

Certificate of Location of Government Corner

1855. Thomas Simpson of the General Land Office set a post in mound (in a marsh) with trench, pits, charred stake and he planted osage orange seeds at the northeast and southwest corners of the mound.

March 23, 1978. We measured the east line of Section 10 and set a temporary quarter on the center line of the road in line with a fence to the east. This fell about 25 feet north of a split between the section corners.

March 10, 1980. Mr. Everett Diepold, 43 years old, has lived in the Southwest Quarter of Section 11 for 6 years, said the fence running east has been accepted as the correct east-west quarter line by him and other adjoining owners.

May 29, 1980. We dug for the corner, John Tupa from Hutchinson, with a backhoe. Down at $1\frac{1}{2}$ feet below the surface we found a $\frac{3}{4}$ inch diam. iron pin. We took reference ties and dug down to the original ground but found nothing else.

January 26, 1983. We set a railroad spike at the corner using the 1980 reference ties.

June 7, 1983. We replaced the railroad spike with a McLeod County cast iron monument.

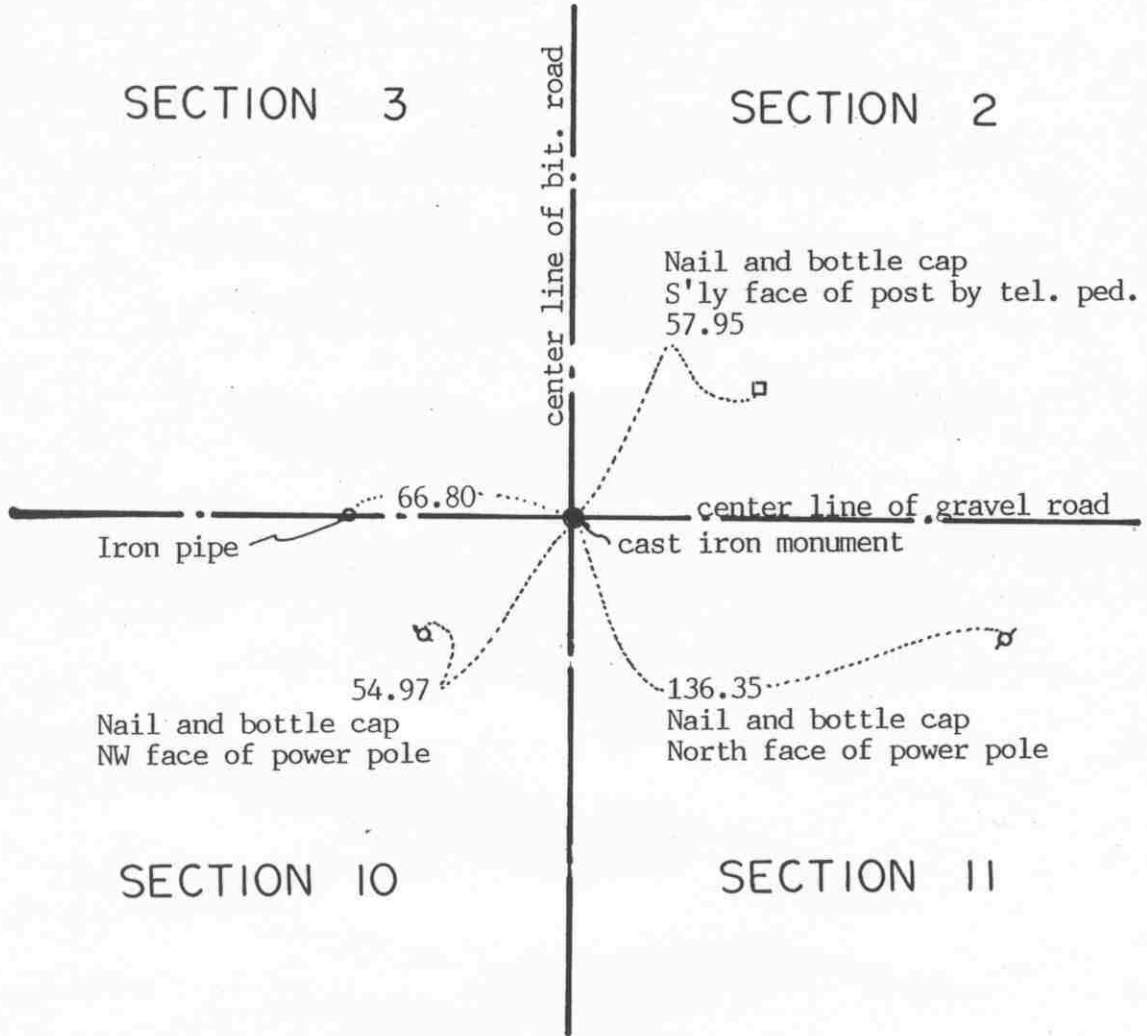
January 3, 1990. We found the cast iron monument in good condition and the reference ties good. We measured the east line of Section 10 and found a fence running west $\frac{1}{4}$ mile north was within 1 foot of being on the $\frac{1}{16}$ line and fence running west $\frac{1}{4}$ mile south within 3 feet of being on the $\frac{1}{16}$ line.

We accept the iron pin we found as having perpetuated the correct location of the quarter corner.

NORTHEAST corner, Section 10, Township 114 North, Range 30 West

Certificate of Location of Government Corner

SKETCH OF REFERENCE TIES
(NO SCALE)



Statement of evidence relative to this corner location on sheet 2

I hereby certify that this document was prepared by me or under my direct supervision.

Willard Pellinen

Willard Pellinen
McLeod County Surveyor
License No. 9626

Date July 23, 1993

OFFICE OF THE COUNTY RECORDER
MCLEOD COUNTY, MINNESOTA.

I hereby certify that this document was filed in this office at 4 o'clock P.M. on the 5th day of August, 1993.

Carman Estlin Mulder, County Recorder

By _____, Deputy

Document No. 254002

NORTHEAST corner, Section 10, Township 114 North, Range 30 West

Certificate of Location of Government Corner

1855. Thomas Simpson of the General Land Office established this corner. He set a post, erected a mound with trench, pits, charred stake and planted osage orange seeds at the corners of the mound.

1922. J.V.McMahon, road overseer, placed a 12 inch by 15 inch rough prairie boulder in the ground. He found traces of a wood stake and placed the stone on top of the stake. This was before the road was graded and was below the natural road surface.

November 12, 1941. Lew Merrill, surveyor, found traces of a wood stake down $3\frac{1}{2}$ feet below the road surface in clay. He found the clay sub-soil had been disturbed and concluded that the stone had been removed by grading operations. He placed a 12 inch by 15 inch stone in the ground and a $\frac{3}{4}$ inch diam. iron rod and lath over the imprint of the old stone.

May 29, 1980. We dug for the corner, John Tupa from Hutchinson with a backhoe. Down at 3 feet below the road surface we found a 3 foot long $\frac{3}{4}$ inch iron rod. We dug down below the rod to 6 feet below the road surface but found nothing else. We buried the iron rod in the hole.

January 26, 1983. We set a railroad spike at the corner using ties taken in 1980 to the iron rod.

June 7, 1983. We replaced the railroad spike with a McLeod County cast iron monument.

November 20, 1989. We found the monument in good condition and the reference ties good.

We accept the iron rod we found as having perpetuated the correct location of the section corner. We believe this is the same iron rod Lew Merrill set in 1941.

April 9, 1993. Only 1 tie remaining. We found the monument in good condition down 4 inches below the bituminous surface. We took additional reference ties.

Certificate of Location of Government Corner



SKETCH OF REFERENCE TIES (NO SCALE)

SECTION 3

center line of gravel road

1/2 inch diam. iron pipe

14.30

cast iron monument

center line of gravel road

30.25

32.25

47.35

Nail and bottle cap
NW face of power pole
Up 4 feet

Punch hole on top
each end of CMP

SECTION 10

Statement of evidence relative to this corner location on sheet 2

I hereby certify that this document was prepared by me or under my direct supervision.

Willard Pellinen

Willard Pellinen
McLeod County Surveyor
License No. 9626

Date Jan. 11, 1991

OFFICE OF THE COUNTY RECORDER
MCLEOD COUNTY, MINNESOTA.

I hereby certify that this document was filed in this office at 9 o'clock A. M. on the 22nd day of Jan 1991.

Carmen Oplie, County Recorder

By _____, Deputy

Document No. 237202

NORTH QUARTER corner, Section 10, Township 114 North, Range 30 West

Certificate of Location of Government Corner

This corner was established by the government in 1855. Thomas Simpson set a post in a mound with trench, pits, charred stake and he planted osage orange seeds at the northeast and southwest corners of the mound.

July 5, 1978. McCombs Knutson Associates (Dickman Knutson, county surveyor) dug for the corner, John Tupa from Hutchinson with a backhoe. They found a short, 6 inch, hub down 1 foot below the road surface. They took reference ties and dug a hole 15 feet by 6 feet by 4 feet deep but found nothing else. The hub was on the center line intersection of the roads.

July 31, 1978. Knutson set a spike at the corner and took additional reference ties.

August 31, 1978. Knutson set a McLeod County cast iron monument at the corner.

November 20, 1989. We found the monument in good condition and the reference ties good.

We accept the monument as marking the correct location of the quarter corner. The hub and the center line intersection of the roads have perpetuated the location of the corner.

EAST QUARTER corner, Section 11, Township 114 North, Range 30 West

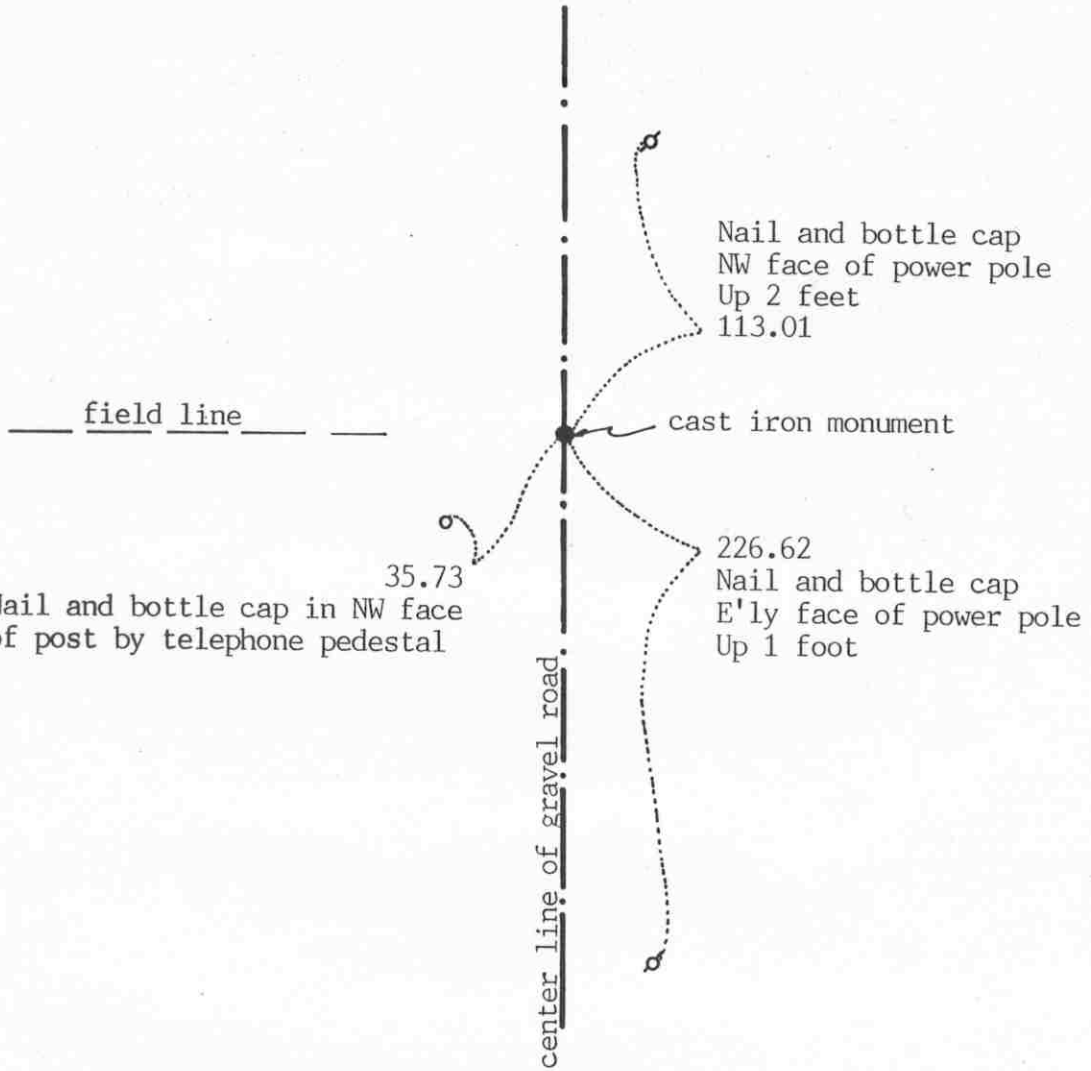
Certificate of Location of Government Corner

SKETCH OF REFERENCE TIES (NO SCALE)



SECTION 11

SECTION 12



Statement of evidence relative to this corner location on sheet 2

I hereby certify that this document was prepared by me or under my direct supervision.

Willard Pellinen

Willard Pellinen
McLeod County Surveyor
License No. 9626

Date January 26, 1991

OFFICE OF THE COUNTY RECORDER
MCLEOD COUNTY, MINNESOTA.

I hereby certify that this document was filed in this office at 1:30 o'clock P.M. on the 4th day of Feb, 1991.

Carmen Ostlie, County Recorder

By _____, Deputy

Document No. 237393

Certificate of Location of Government Corner

1855. Thomas Simpson of the General Land Office established this corner. He set a post in mound with trench, pits and charred stake, and he planted osage orange seeds at the northeast and southwest corners of the mound.

1930. County Highway Department field notes show this corner to be on the center line P.I. of the road.

July 5, 1978. We dug for the corner, John Tupa from Hutchinson with a backhoe. We dug at a proration of the County Highway distances from the section corners. We dug a hole 10 feet long, 8 feet wide and 3 feet deep but found nothing.

February 15, 1983. We set an iron pipe on the center line of the road at a proration of the Highway Department distances. This falls on the easterly extension of a field line to the west, and is within 1 foot of being on a split between the section corners.

March 25, 1983. We replaced the iron pipe with a McLeod County cast iron monument and took reference ties.

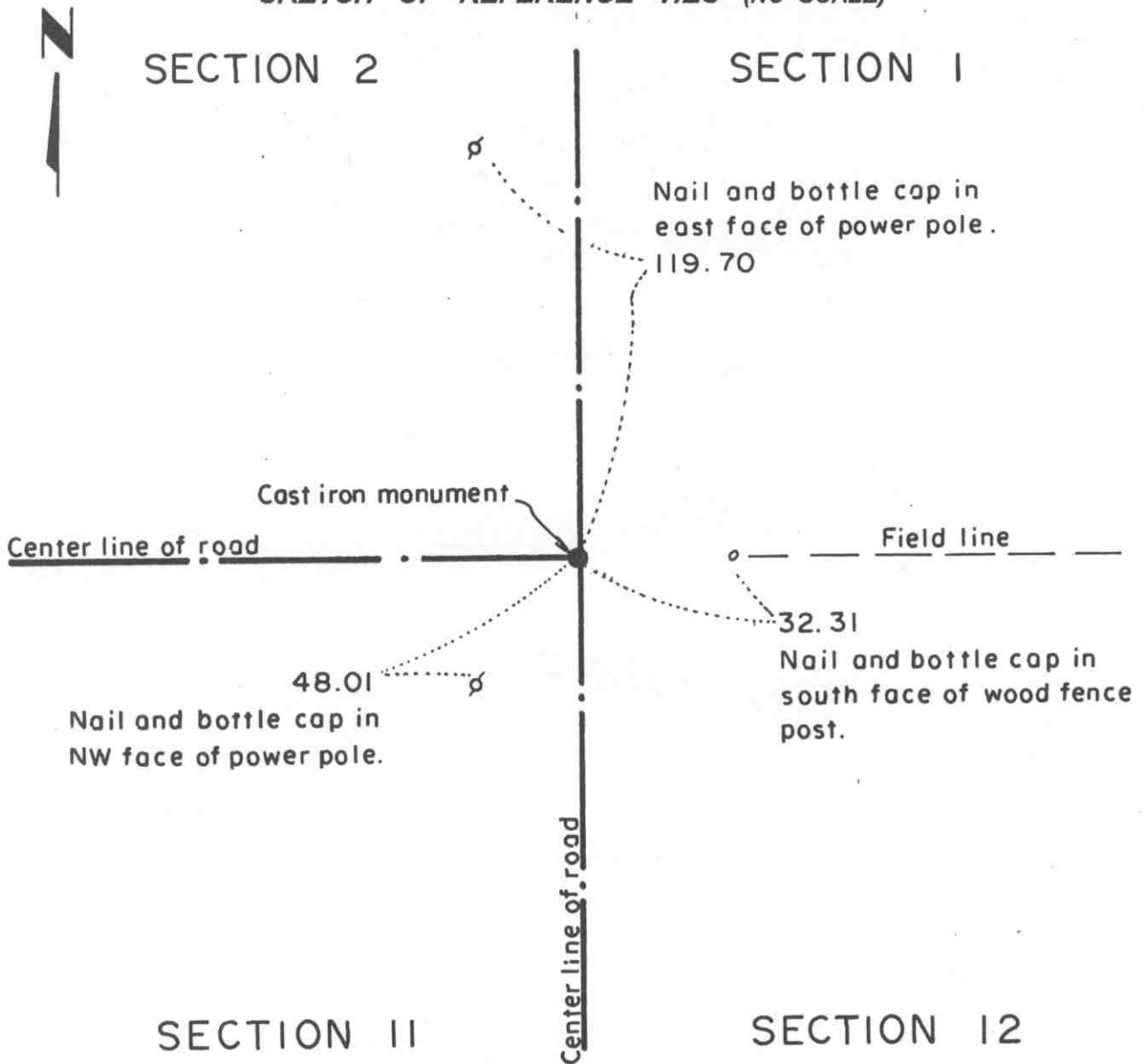
January 4, 1990. We found the monument in good condition and the reference ties good.

There being no evidence to the contrary, we accept this location as marking the east quarter corner.

Certificate of Location of Government Corner

NORTHEAST corner, Section 11, Township 114 North, Range 30 West

SKETCH OF REFERENCE TIES (NO SCALE)



Statement of evidence relative to this corner location on sheet 2

I hereby certify that this document was prepared by me or under my direct supervision.

Willard Pellinen
Willard Pellinen
McLeod County Surveyor
License No. 9626.

Date July 6, 1995

OFFICE OF THE COUNTY RECORDER
MCLEOD COUNTY, MINNESOTA

I hereby certify that this document was filed in this office at 9 o'clock A.M. on the 18th day of July, 19 95.

Carmen Dotliwelder, County Recorder

By _____, Deputy.

Document No. 266993

Certificate of Location of Government Corner
Northeast Corner, Section 11, Township 114 North, Range 30 West

1855. Thomas Simpson of the General Land Office originally established this corner. He set a post, erected mound with trench and pits, charred stake and planted osage orange seeds at each angle.

1978. Mr. Zieman, 88 years old and Mr. Elmer Kirchoff, 70 years old, former township board members, said when the road was built stones were found at most corners. Roads were built along section lines. Some of the stones were moved by grading.

July 5, 1978. Dickman Knutson, county surveyor, excavated for the corner. (John Tupa from Hutchinson with a backhoe) They dug a hole 10 feet by 10 feet by 4 feet deep but found no evidence of the government corner.

July 31, 1978. Knutson set a spike at the center line intersection of the roads, roads north, south and west, and took available reference ties.

August 31, 1978. Knutson set a McLeod County cast iron monument at the corner.

February 16, 1995. We found the monument in good condition down 8 inches below the surface of the gravel road and took new reference ties.

Certificate of Location of Government Corner



SKETCH OF REFERENCE TIES

(NO SCALE)

SECTION 2

fence

cast iron monument

center line of gravel road

223.50

96.21

Nail and bottle cap
North face of power pole

Nail and bottle cap
N'ly face of power pole

fence

SECTION 11

Statement of evidence relative to this corner location on sheet 2

I hereby certify that this document was prepared by me or under my direct supervision.

Willard Pellinen

Willard Pellinen
McLeod County Surveyor
License No. 9626

Date Jun. 30, 1991

OFFICE OF THE COUNTY RECORDER
MCLEOD COUNTY, MINNESOTA.

I hereby certify that this document was filed in this office at 1:30 o'clock P.M. on the 4th day of Feb, 1991.

Carmin Ostie, County Recorder

By _____, Deputy

Document No. 237394

Certificate of Location of Government Corner

1855. This corner was established by Thomas Simpson of the General Land Office. He set a post in a mound with trench, pits, charred stake and he planted osage orange seeds at the northeast and southwest corners of the mound.

March 27, 1978. We measured the north line of Section 11 and set a temporary quarter corner on the center line of a gravel road in line with fences north and south.

April 5, 1978. John Busta, 73 years old, has lived in the Northwest Quarter of Section 11 for 36 years, said the fences running north and south are on the quarter lines and the center line of the road is the section line.

July 5, 1978. We dug for the corner, John Tupa from Hutchinson with a backhoe. We dug a hole 6 feet by 8 feet by 4 feet deep but found nothing.

July 31, 1978. We set a spike at the center line of the road in line with the fences to the north and south, and took reference ties.

August 31, 1978. We set a McLeod County cast iron monument at the corner.

January 9, 1990. We found the cast iron monument in good condition 10 inches below the surface of the road and took new reference ties.

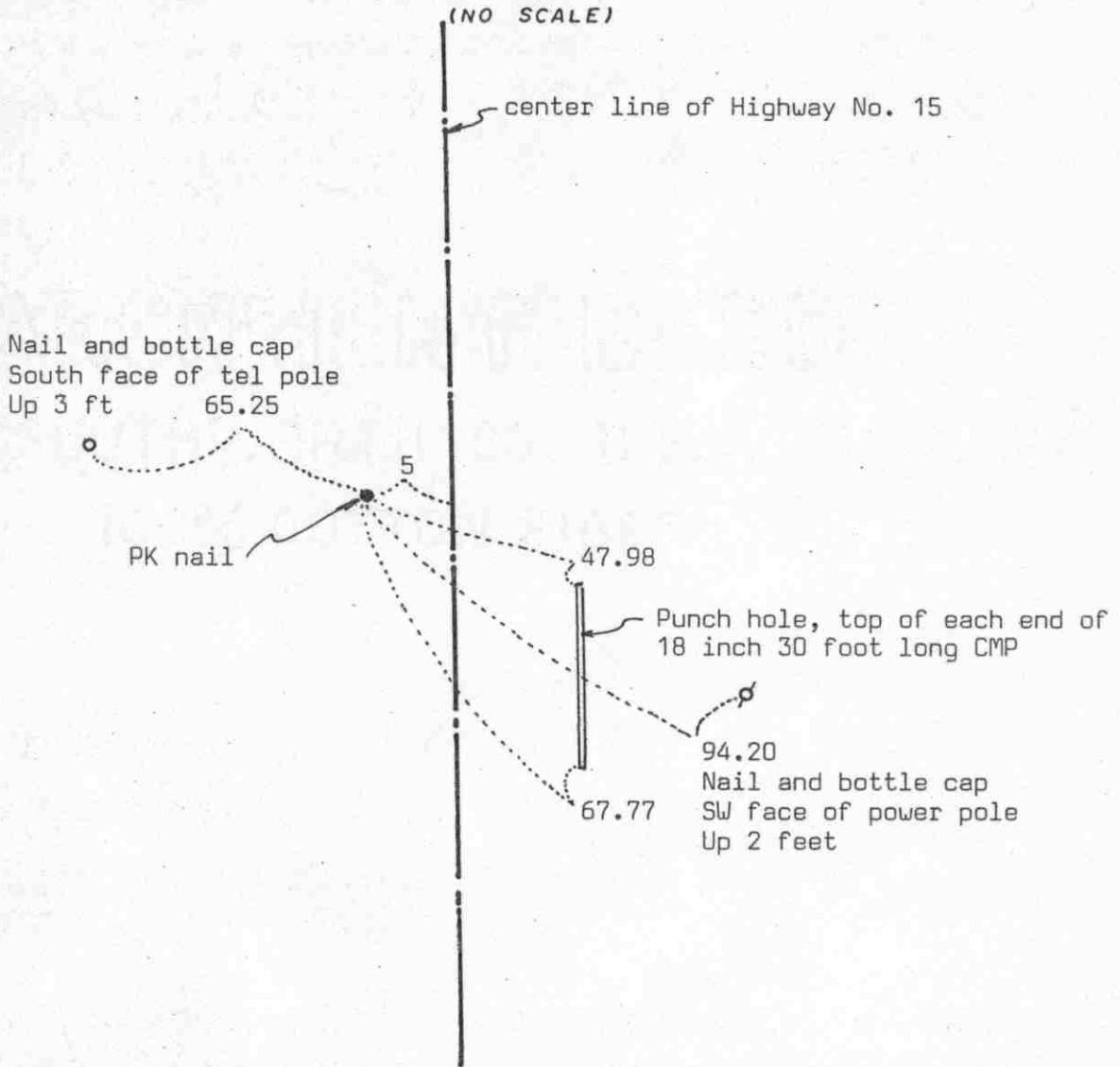
We feel the intersection of the center line of the gravel road and the fences has perpetuated the correct location of the quarter corner.

Certificate of Location of Government Corner



SKETCH OF REFERENCE TIES

(NO SCALE)



Statement of evidence relative to this corner location on sheet 2

I hereby certify that this document was prepared by me or under my direct supervision.

Willard Pellinen

Willard Pellinen
McLeod County Surveyor
License No. 9626

Date 4/4/89

OFFICE OF THE COUNTY RECORDER
MCLEOD COUNTY, MINNESOTA.

I hereby certify that this document was filed in this office at 4 o'clock P. M. on the 20th day of April, 1989.

Carmen Jotlie, County Recorder

By _____, Deputy

Document No. 227810

Certificate of Location of Government Corner

This corner was originally set in 1855 by John Ryan of the Government Land Office. He "set quarter section post, deposited charcoal, dug pits and trench, built mound and planted osage orange seeds at corners of mound."

In March, 1969, McCombs Knutson Associates, Dickman Knutson, County Surveyor, set the corner on Highway 15 stationing as shown on highway right of way map.

On June 24, 1983, we checked the reference ties and on January 31, 1989, we checked the ties again and set a $\frac{1}{2}$ inch diameter iron pipe at the corner.

We believe the corner set by MKA is the correct corner which has been perpetuated by the State Highway No. 15 stationing.

Certificate of Location of Government Corner



SKETCH OF REFERENCE TIES
(NO SCALE)

SECTION 1
T. 114, R. 30

SECTION 6
T. 114, R. 29

Punch hole on top of each end of 24 inch
CMP, 60 feet long.

138.51

136.77

fence

fence

cast iron monument

2

74.27

Nail and bottle cap
N'ly face of power pole

center line of Highway No. 15

SECTION 12
T. 114, R. 30

SECTION 7
T. 114, R. 29

Statement of evidence relative to this corner location on sheet 2

I hereby certify that this document
was prepared by me or under my
direct supervision.

OFFICE OF THE COUNTY RECORDER
MCLEOD COUNTY, MINNESOTA.

Willard Pellinen

Willard Pellinen
McLeod County Surveyor
License No. 9626

I hereby certify that this document was filed in this
office at 9 o'clock A.M. on the 7th day
of February, 1991.

Armen Ostlie, County Recorder

Date February 1, 1991

By _____, Deputy

Document No. 237430

NORTHEAST corner, Section 12, Township 114 North, Range 30 West

Certificate of Location of Government Corner

1855. The east line of Township 114, Range 30 was run by John Ryan of the General Land Office. The northeast corner of Section 12 fell in a pond, so John Ryan set a witness corner 3 chains south of the section corner on the south edge of the pond. He set a post, deposited charcoal, dug pits and trench, built mound and planted osage seeds at the corners of the mound.

April 21, 1900. Survey by E.L.Higgins shows this corner to be in Mud Lake.

State Highway right of way map shows this corner to be 2 feet east of center line station 590+66.5.

October 30, 1970. McCombs Knutson Associates (Dickman Knutson, county surveyor) set an iron pipe at the location shown on the highway map. (2 feet east of Station 590+66.5) They took available reference ties.

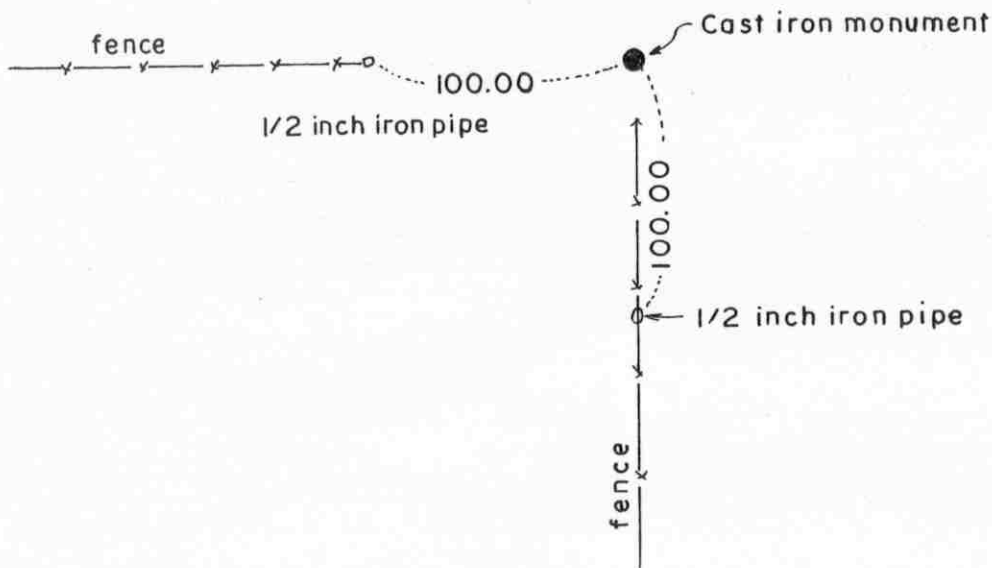
January 9, 1990. We found the iron pipe set by Knutson 6 inches below the surface of the bituminous road. We took new reference ties.

Certificate of Location of Government Corner

NORTH QUARTER corner, Section 12, Township 114 North, Range 30 West

SKETCH OF REFERENCE TIES (NO SCALE)

SECTION 1



SECTION 12

Statement of evidence relative to this corner location on sheet 2

I hereby certify that this document was prepared by me or under my direct supervision.

Willard Pellinen
Willard Pellinen
McLeod County Surveyor
License No. 9626.

Date Jan. 6, 1995

OFFICE OF THE COUNTY RECORDER
MCLEOD COUNTY, MINNESOTA

I hereby certify that this document was filed in this office at 9 o'clock A.M. on the 10th day of January, 19 95.

Carmen Ottilie Mulder County Recorder

By _____, Deputy.

Document No. 263619

Certificate of Location of Government Corner
North Quarter Corner, Section 12, Township 114 North, Range 30 West

1855. Thomas Simpson of the General Land Office originally established this corner. He set a post in a mound with trench and pits, charred stake and planted osage orange seeds at the northeast and southwest corners of the mound.

Adjacent land owners have accepted the fence intersection as being the quarter corner. Fences running south and west. This fence corner is about 17 feet west of being on a split between the section corners and approximately 1 1/2 feet south of a straight line. A fence, 1/4 mile south, is on line between this corner and the south quarter corner.

June 28, 1983. We set a McLeod County cast iron monument at the fence intersection and took reference ties.

January, 1995. Cast iron monument in good condition.